



10MUSE

Movies & TV-Shows

Movies TV-Shows Home Theater

EDGE OF TOMORROW HOMESMAN BEARS NOAH IMMIGRANT ENEMY the book thief

Genres Countries Crew Filters Sort 2916

Thor: The Dark World PG-13 7.2

United States Of America, 2013
Runtime: 112'
Action, Adventure, Fantasy
Director: Alan Taylor

Actors: Chris Hemsworth, Natalie Portman, Tom Hiddleston, Idris Elba, Jaimie Alexander, Stellan Skarsgård, Zachary Levi, Christopher Eccleston, Adewale Akinnuoye-Agbaje, Kat Dennings

Thor fights to restore order across the cosmos... but an ancient race led by the vengeful Malekith returns to plunge the universe back into darkness. Faced with an enemy that even Odin and Asgard cannot withstand, Thor must embark on his most perilous and personal journey yet, one that will reunite him with Jane Foster and force him to sacrifice everything to save us all.

IN CINEMAS SOON

Inserting Movies - The Assistant

The assistant is available for every shared folder that has been declared as 'Movies'. It will scan the shared folders for movie files and make suggestions with TMDb links according to the filenames. It will then automatically download information and images from TMDb, Rotten Tomatoes and IMDb.

The Assistant will identify movies easier if they are named similarly to the IMDb titles. Examples:

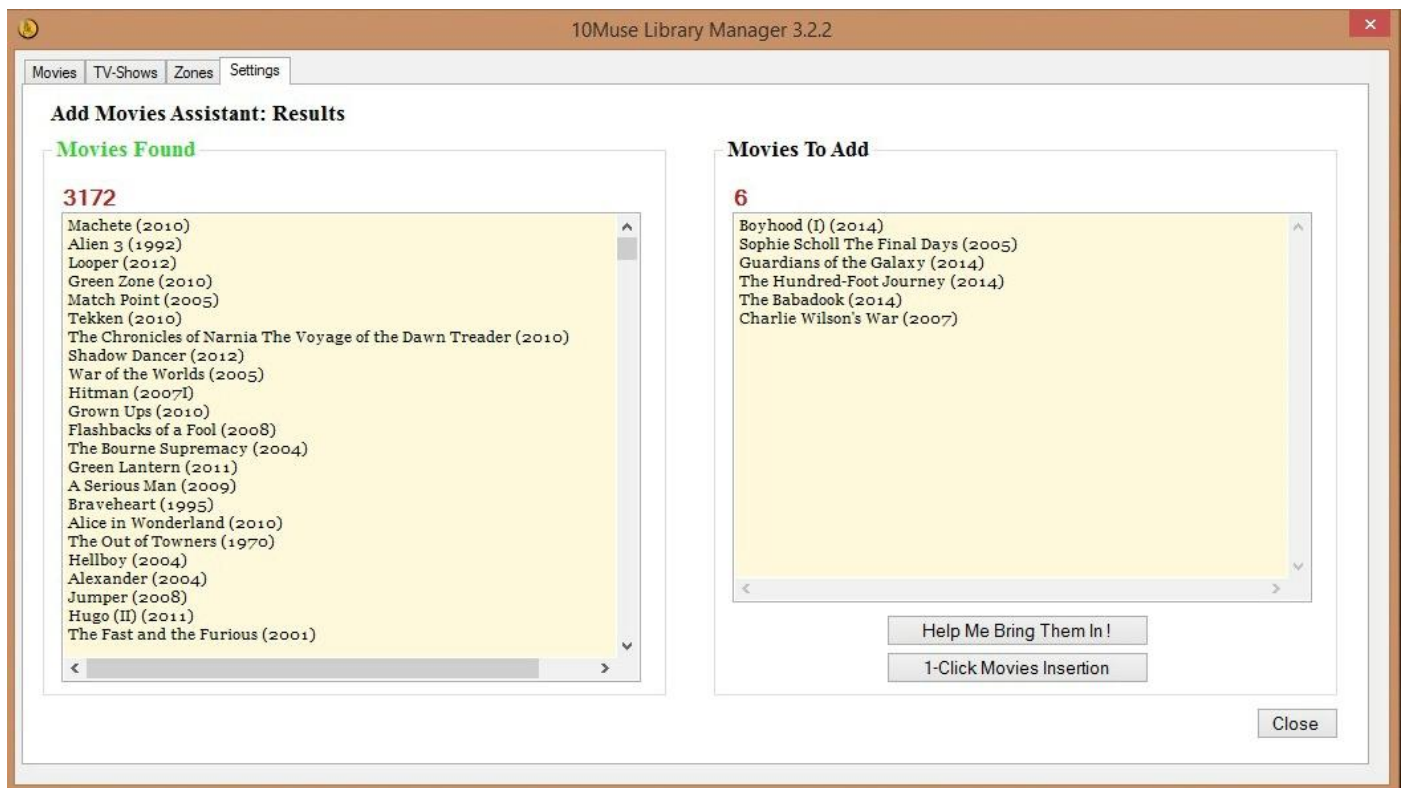
- The Adjustment Bureau (2011)
- Company of Heroes (Video 2013)
- The Debt (I) (2010)

For all of the above examples the Assistant will be able to extract the movie title and the year. The year will be sent to the TMDb search engine as an extra parameter, which will drastically reduce the number of returned movies.

First, the shared folder will be scanned for supported files. For details about the supported file types look at the 'Scanning' section.

The scanned files will be presented into 2 list boxes:

- The left list box will list files that already exist in the database.
- The middle list box will list files that the assistant will help insert into the database



The '1-Click Movies Insertion' option will try to identify the movies and download all info in one step. To secure that no wrongly identified movies will be inserted into the database, only movies that return a single result will be inserted. Movies that return multiple or zero results will be ignored. They can be brought in with the 'Help Me Bring Them In' option.

The 'Help Me Bring Them In' option will present all results for every movie and ask for user input to identify the movies. With a double-click on a result it will automatically move to the next movie. It will then download info and images for all the identified movies. If a movie cannot be identified, you can always input your own search string and click 'Refresh' to get new results.

Managing the library

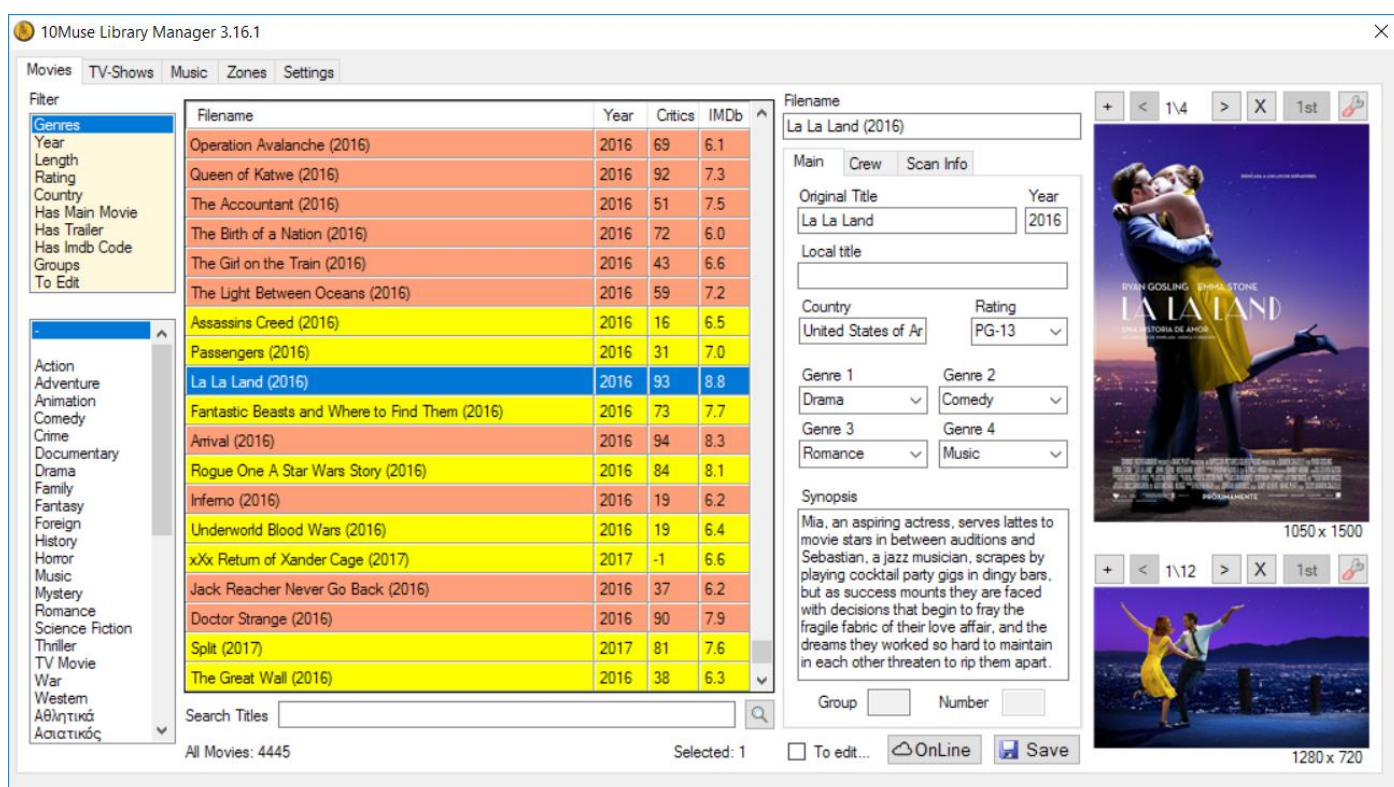
Navigation

The box 'Filters' lists various filters that can be used to ease navigation. Upon clicking on a filter, the box 'Values' will be populated with all the unique values found in the collection for the selected filter. Clicking on a value will show only the corresponding movies.

The first value is always a dash (-), representing "All movies".

The 'Search Titles' textbox below the Movies Table is practically one more filter. It searches the fields "Original Title", "Local Title", "Filename" and the *main movie scan path* for the inputted string and displays only the movies that contain it. The search is NOT case sensitive, you can search with capital letters without the need to change case.

One more filter can be found inside the Crew tab, next to the Actors and Directors names. It will display only the movies of the corresponding actor or director.



Editing

Every piece of movie info is editable, except the Rotten Tomatoes and IMDb Ratings. Upon editing a field, the 'Save' button will save the changes to the database.

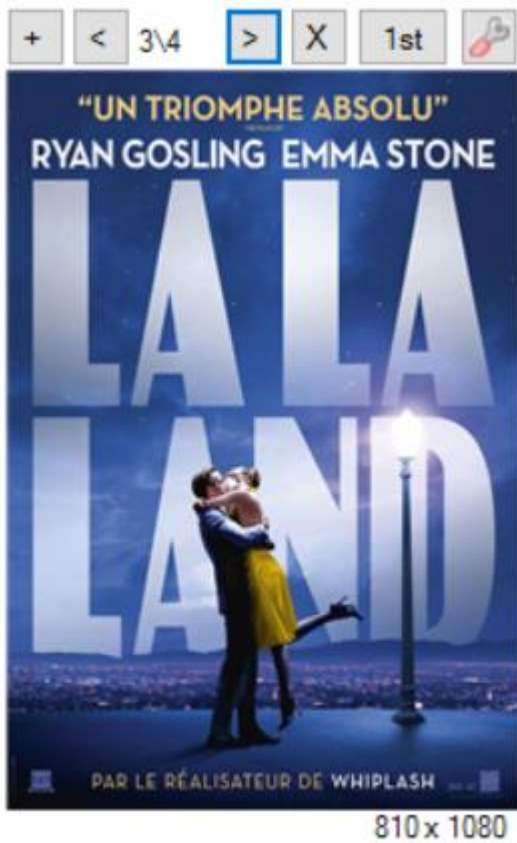
The checkbox titled "To Edit" is an auxiliary tool to get entries marked. All marked entries can be shown with use of the "To Edit" filter. This info does not get exported to the iPad.

The 'Filename' field

The 'Filename' field is the "Entry Key" for the internal database, thus each entry must have a different filename. If you try to change the filename string to a string that another entry has as 'Filename', you will get a warning and the change will not be executed. This is also the field responsible for the connection of the library to the media files. For the movies to get scanned, the filenames (or folder names) of the media on your NAS must be the same as the value of the corresponding *Filename* field in the library (more info in 'Scanning').

Images

The button bar above the image thumbnails consists of the following buttons:



- (+): Adds the image contained in the clipboard.
- (<): Selects the previous image.
- (>): Selects the next image.
- (X): Deletes the currently selected image.
- (1st): Moves the currently selected image to the first place.

The first placed image is the one that will be exported to the iPad.

(Tool icon): Opens the currently selected image for editing with the windows default application.

A click on the image thumbnail shows a preview of the image with the same resolution as it will be presented from the iPad application (non-retina). A click on the preview image hides the preview again.

Group \ Ungroup (from the context menu)

With the 'Group' function, multiple entries can be grouped together so they appear as a single entry on the iPad application.

From the 2nd disc on, images (cover and fanart) are optional.

The 'Group' filter will list all groups. The 'Group Number' is used by the system only internally. It doesn't affect what the user sees on the iPad app.

To add or remove discs from a group, the entries have to be ungrouped and regrouped with the new wished entries.

Scanning

The 'Scan Servers' function looks for the 'Filename' field of the selected library's movie entries inside the defined Movie (for main movie) and Trailer (for trailers) folders. If a main movie is found, the files are analyzed, populating the Scan Info Tab with the gathered information. The corresponding line entries inside the movies Table get a different color depending on the movie format.

The *Insert Movies Assistant* automatically populates the 'Filename' field with the filename of the found movie file. If the field value is manually changed by the user, the movie file has to be renamed accordingly (or vice versa).

The fact that movie entries are not bound to full paths, allows users to easily move their files in different folders or copy them to a new server without losing the linking to the database. A simple rescan will update all paths.

The following formats are supported:

(In the list below 'filename' represents the value of the 'Filename' field)

- BDMV The scanner looks for "filename\BDMV\index.bdmv"
- VIDEO_TS The scanner looks for "filename\VIDEO_TS\VIDEO_TS.IFO"
- mkv The scanner looks for "filename.mkv"
- Iso* The scanner looks for "filename.iso"

Further extensions supported: avi, xvid, divx, mp4, wmv, m2ts, ts, mov and m4v.

* Support for .iso files is limited. Not all the MediaInfo (Resolution, Audio codecs etc.) will be extracted. As a result the 'Only HD' filter on the iPad application may not show all High Definition movies.

TIP: To get the most out of your 10Muse system, rip your movies as "Main Movie only" without including the DVD or Blu-ray menus. Although full rips will also work, the system will lack part of the immediacy you get when the movie starts directly. For the extra disc material you would like to put into the system, we recommend the multidisc function.

Scan Info fields are non-editable except for the 'Duration' field. The reason for that is that the duration information cannot be automatically extracted for some iso rips or it can be wrongly extracted for Full Menu rips. In these cases it can be filled manually. For convenience, you can use the play button next to the field, which will start playback with your default windows player, where you can quickly check the total time and input it into the 'Duration' field.

Incremental Scanning

For the purpose of speeding rescanning, if a movie is found at the same location and the same format as when it was previously scanned, the movie will not be analyzed again and the 'Scan Info' of the last scan will be kept.

If less than 20 entries are selected (or a single TV-Show), scanning will not be incremental, all found movies will be analyzed regardless of past scan results.

Scanning of TV-Shows episodes

The shared folder(s) for TV-Shows are defined as 'TV-Shows' in the Settings tab. Inside the shared folders every show lies in it's own folder, named as the 'Foldername' field in 'Library Manager' (see screenshot below).

The screenshot shows the '10Muse Library Manager 3.16.1' interface. The 'TV-Shows' tab is active. On the left, a list of series is shown, with 'The Flash (2014)' selected. Below it, a list of episodes is visible. The main panel displays details for 'The Flash (2014)'. The 'Foldername' field is circled in red. The 'Overview' section contains a description of the show. The 'Banner' and 'Fanart' sections show images related to the show.

| Series | First Aired |
|------------------------------|-------------------|
| Modern Family | 2009-09-23 |
| Ben 10 Alien Force | 2008-04-18 |
| Looney Tunes | 1930-04-19 |
| The Flash (2014) | 2014-10-07 |
| Monty Python's Personal Best | 2006-02-22 |
| Dekalog | 1989-03-19 |
| American horror Story | 2011-10-05 |
| Returned | 2012-11-26 |

| Episode | Name |
|---------|----------------------------|
| s01_e01 | City of Heroes |
| s01_e02 | Fastest Man Alive |
| s01_e03 | Things You Can't Outrun |
| s01_e04 | Going Rogue |
| s01_e05 | Plastique |
| s01_e06 | The Flash is Born |
| s01_e07 | Power Outage |
| s01_e08 | Flash vs. Arrow (1) |
| s01_e09 | The Man in the Yellow Suit |
| s01_e10 | Revenge of the Rogues |
| s01_e11 | The Sound and the Fury |

The Flash (2014)

Show Name: The Flash (2014) thetvdb ID: 279121
Rating: 8.5
Banning Count: 128
First Aired: 2014-10-07 Status: Continuing
Network: The CW Language: en
Last Updated: 1444889257

Foldername: The Flash (2014)

Overview
After a particle accelerator causes a freak storm, CSI Investigator Barry Allen is struck by lightning and falls into a coma. Months later he awakens with the power of super speed, granting him the ability to move through Central City like an unseen guardian angel. Though initially excited by his

Banner: + < 1\11 > X 1st

Fanart: 1280 x 720 + < 1\24 > X 1st

Each specific TV-Show folder contains the episode files (in the root or in subfolders). In order for the episodes to get scanned, their filenames must contain one of the strings of the "Possible Paths" field (see screenshot below).

The screenshot shows the '10Muse Library Manager 3.16.1' interface. The 'TV-Shows' tab is active. On the left, a list of series is shown, with 'Game of Thrones' selected. Below it, a list of episodes is visible. The main panel displays details for 'Game of Thrones: s06_e08'. The 'Possible Paths' field is circled in red. The 'Overview' section contains a description of the episode. The 'Media Info' section shows technical details about the video file.

| Series | First Aired |
|-----------------------------------|-------------------|
| Game of Thrones | 2011-04-17 |
| The Thom Birds | 1983-11-06 |
| Mildred Pierce | 2011-03-27 |
| Avatar The Last Airbender | 2005-02-21 |
| The Joy of Painting | 1983-01-11 |
| Pride and Prejudice (1995) custom | 1995-09-24 |
| Hatfields & McCoy's | 2012-05-28 |
| 50 - 50 | 2005-09-30 |

| Episode | Name |
|----------------|------------------------|
| s06_e01 | The Red Woman |
| s06_e02 | Home |
| s06_e03 | Oathbreaker |
| s06_e04 | Book of the Stranger |
| s06_e05 | The Door |
| s06_e06 | Blood of My Blood |
| s06_e07 | The Broken Man |
| s06_e08 | No One |
| s06_e09 | Battle of the Bastards |
| s06_e10 | The Winds of Winter |
| s00_e15 | The Story So Far |

Game of Thrones: s06_e08

Name: No One Season: 6
First Aired: 2016-06-12 Number: 8
Director: Mark Mylod Rating: 7.7
Writer: David Benioff/D. B. Weiss Rating Count: 38

Possible Paths
Game of Thrones \ s06e08
Game of Thrones \ s06_e08
Game of Thrones \ s06_e08
Game of Thrones \ 6x08

Overview
While Jaime weighs his options, Cersei answers a request. Tyrion's plans bear fruit. Arya faces a new test.

Media Info
Video Codec: H264
Aspect Ratio: 16:9
Audio Codec: AAC
Audio Channels: 2
Size (Gbytes) | Bitrate (Mbps): 0,35 | 9
Date added: 20160613
Resolution: 720/402
Duration: 58

Video File
Episode: [Play] [List] [Refresh]

Scanning of Trailers

Trailers can be added into the 10Muse system in two different ways (which can be used concurrently):

- Trailer files inside their own 'Trailers' folder. The shared folder has to be defined as 'Trailers' in the Settings tab and the trailer files\folders names have to match the Filename field.
- Trailer files inside a 'Movies' shared folder with one of the predefined suffixes. 2 suffixes are supported: 'trailer' and '_trailer'. NOT case sensitive.

Examples for trailers that will get scanned (for filename field 'Transformers (2007)'):

- \TrailersFolder\Transformers (2007)\Transformers (2007).mov
- \TrailersFolder\Transformers (2007)\VIDEO_TS\VIDEO_TS.IFO
- \MoviesFolder\Transformers (2007)_Trailer.mkv
- \MoviesFolder\Transformers (2007)\Transformers (2007)trailer.mov

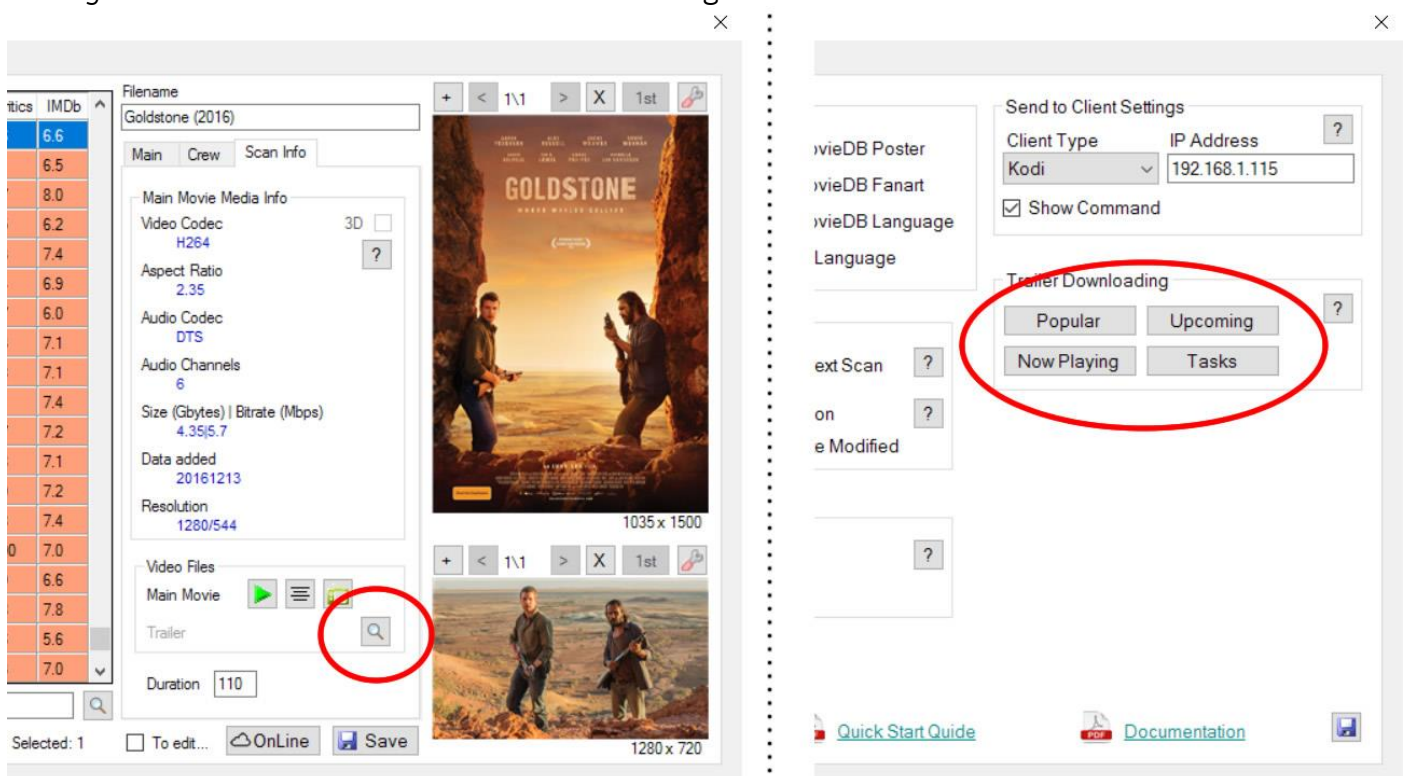
Trailers Download

The Trailers Download functions will gather YouTube trailers information from TMDb, download the selected trailer, rename it using the 'Filename' field and copy it into the defined trailers folder.

Definition of at least one trailers folder is required. In case more trailers folders are defined, the first (top) will be used. Make sure you also have write permission to that folder.

There are two ways to download trailers (see screenshots below):

1. For movies that already exist in the database and have no trailer, a 'search trailer' icon will appear under 'Scan Info'.
2. The latest movies can be added with the 'Popular', 'Upcoming' and 'Now Playing' buttons under 'Settings'. This will also download movie info and images.



The 'Popular', 'Upcoming' and 'Now Playing' buttons will present movie suggestions by using corresponding TMDb lists (changed daily). Movies will appear only if:

- They do not already exist in the Library Manager database
- They have at least one High Definition trailer
- They have complete Info (year, country, genres, crew, plot) and Poster.

Exporting

To avoid the inconvenient use of iTunes, the transfer of the files to the iPad is achieved through use of the *Dropbox* service. The Export functions prepare the iPad files (databases and images) and upload them to Dropbox. With a tap of the 'Dropbox Update' button on the iPad app, the exported files get wirelessly downloaded into the iPad.

Only movies with either a main movie, a trailer or both will be exported. For TV-Shows, only scanned episodes will be exported and shows with at least one scanned episode.

When exporting an updated library, 'Library Manager' remembers the last exported files and exports files only for new movies or for movies that have their selected images (cover or fanart) changed. In addition, the "Dropbox Update" function of the iPad app checks and compares the files in the cloud and only downloads files that are either new or changed. As a result, exporting an updated library is fast, regardless of the total size of the library.

The transfer of the exported files to the iPad serves two purposes: First, by having databases and images locally saved, the iPad app's UI operates fast and smoothly. Second, it makes the iPad app's usage independent of any other application or PC. After exporting, 'Library Manager' is no longer required. On everyday use, the 10Muse iPad app requires connection only to the streaming clients.